

**SAYAKA offers two fully automated PCB in-line routers:**  
**SAM-CT23BP is equipped with a turn-table system for shortened tact time.**  
**SAM-CT23BPW is capable of handling a larger PCB up to 300 x 400mm.**

### SAYAKA SAM-CT23BP

- By utilizing the turn-table system, PCBs are moved quickly through the loading, cutting and unloading process. Operation time reduced with a loading/unloading tact time of 4 seconds.
- Fully automated in-line PCB router with optional loader and various unloader systems available.



### SAYAKA SAM-CT23BPW

- Versatile in-line PCB router capable of handling up to 300 x 400 mm (11.8" x 15.7") PCB.
- Fully automated in-line PCB router with optional loader and various unloader systems available.
- Easy and short changeover of program and jigs.
- Conveyor equipped with auto-width adjustment function.

	SAM-CT23BP	SAM-CT23BPW
Type	In-line	
Program	Direct Teaching Method	
Routing Area	250x350 mm (9.8"x13.8")	
Max PCB Thickness (Standard)	2.0 mm (0.079")	
Max PCB Thickness (Option)	6 mm (0.236")	
PCB Material	Glass Epoxy, CEM1, CEM3, FR4 etc.	
Router Bit Diameter	0.8-3.0 mm (0.031"-0.079")	
Repeatability	± 0.01 mm (± 0.0004")	
Spindle Motor	4025 (max 60,000rpm)	
Door	Manual door for maintenance	
Electrical Power	3 phase AC208V 60Hz	
Pneumatic	0.5MPa (72psi)	
Router Size & Weight	2162Wx1000Dx1388H mm (85"Wx39"Dx55"H) 480kg (1,060 lbs)	2000Wx900Dx1520H mm (79"Wx35"Dx58"H) 650kg (1,430 lbs)
Dust Collector Model	VNA-30	



Pick & Place for Loading/Unloading PC Board.

All specifications are subject to change without prior notice.

# SAYAKA PCB ROUTER

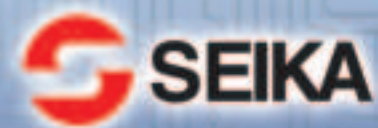


Seika Machinery, Inc.  
 North American Distributor  
 and Technical Support  
 E-mail: info@seikausa.com  
 www.seikausa.com

Los Angeles Office:  
 3528 Torrance Boulevard  
 Suite 100  
 Torrance, CA 90503  
 Phone: (310) 540-7310  
 Fax: (310) 540-7930

Atlanta Branch Office:  
 3030 Business Park Drive  
 Suite 3030-B  
 Norcross, GA 30071  
 Phone: (770) 446-3116  
 Fax: (770) 446-3118

Manufactured by SAYAKA Co., LTD., Japan



**SAYAKA SAM-CT23Q and SAM-CT22S** are table-top, automatic precision PCB routers. The compact size and weight of these models are ideal for limited work spaces and versatility in production line set-up.

### SAYAKA SAM-CT23Q



- **Compact Table-Top Design**  
Sayaka's compact size and weight eases line arrangement and reduces time in setting up production.
- **Automatic Operation with Safety Features**  
Easy push button control starts operation and safety door protects the operator during the routing process.
- **Low-Cost Router**  
Precision table-top router with powerful dust collector offered at competitive price.

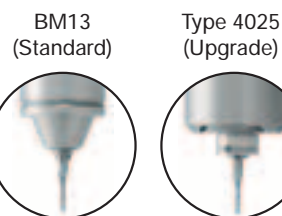
### SAYAKA SAM-CT22S



- **Sophisticated Software (Windows-Based) for Easy Programming**  
Same features as SAM-CT23/56NJ series;
  - Point-and-click computer programming
  - Auto-alignment with CCD camera
  - Extended router bit life programming
- **Automatic Operation and Safety Feature**  
Push button control and automatic safety door
- **No Compressed Air Required**

#### SAM-CT23Q

##### Spindle Motor\*



##### Door\*\*

- Manual (Standard)
- Automatic (Upgrade)

**SAYAKA SAM-CT23NJ/56NJ Series** are fast and accurate stand-alone PCB routers with a CCD camera and sophisticated image-processing software.

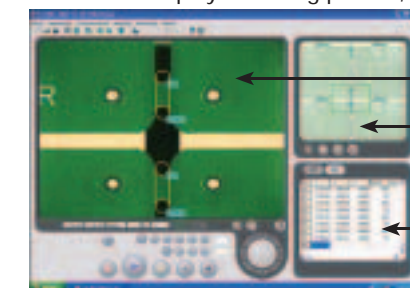
### SAYAKA SAM-CT23NJ/56NJ

- **Solution for Low-Stress Depanelization**  
High-Speed router bit precisely cuts densely populated PCBs without stressing the board. Cutting paths can be set as close as 0.5mm to a component.
- **Advanced Image-Processing Software offers Point-and-Click Operation for Programming Router Paths.**  
CCD Camera captures an image of the PCB and easy programming of cutting paths is achieved by simple Point-and-Click Windows-based operation on the computer screen. Time for programming is reduced and simplified by this software.
- **Automatic Alignment Compensation by CCD Camera**  
CCD camera reads fiducial marks on PCB and compensates for variance on relative position of cutting paths.
- **Extended Router Bit Life**  
Automatic 5-stage depth adjustment extends bit life and reduces time and cost of replacement.
- **High-Speed X-Y Robot and Z-axis Servo Motor**  
Reduces tact time and improves productivity
- **Small Footprint**



#### Router Programming Goes High-Tech

- A quick and easy method to learn and use
- Accurate software programming to 10 microns
- Ideal for programming arcs and circles
- Save thousands of programs as Windows files
- Transfer programs to other routers with a jump drive
- Real time display of cutting pattern, sequence and X/Y coordinates



- ← Programming View
- ← Routing Order
- ← X/Y Coordinates

	SAM-CT23Q		SAM-CT22S	SAM-CT23NJ	SAM-CT56NJ
Type	Table Top			Stand Alone	
Program	Direct Teaching Method		Image Processing Software	Image Processing Software	
Routing Area	250 x 350 mm (9.8" x 13.8")		250 x 250 mm (9.8" x 9.8")	250 x 350 mm (9.8" x 13.8")	500 x 600 mm (19.7" x 23.6")
Max PCB Thickness (Standard)	1.6 mm (0.063")	2.0 mm (0.079")	1.6 mm (0.063")	2.0 mm (0.079")	
Max PCB Thickness (Option)	n/a	6.0mm	n/a	6 mm (0.236")	
PCB Material	Glass Epoxy, CEM1, CEM3, FR4 etc.			Glass Epoxy, CEM1, CEM3, FR4 etc.	
Router Bit Diameter	0.8-3.0 mm (0.031"-0.079")			0.8-3.0 mm (0.031"-0.079")	
Repeatability	± 0.02 mm (± 0.0008")			± 0.01 mm (± 0.0004")	
Spindle Motor*	BM13 (40,000rpm)	4025 (max 60,000rpm)	4025 (max 60,000rpm)	4025 (max 60,000rpm)	
Door**	Manual	Auto	Auto	Auto	
Electrical Power	AC115V 60Hz			3 phase AC208V 60Hz	
Pneumatic	0.5MPa (72psi)		Not required	0.5MPa (72psi)	
Router Size & Weight	720W x 640D x 500H mm (28"W x 25"D x 20"H) 60kg (132 lbs)		700W x 905D x 448H mm (28"W x 36"D x 18"H) 67kg (148 lbs)	800W x 850D x 1422H mm (31"W x 33"D x 56"H) 270kg (600 lbs)	1140W x 1125D x 1410H mm (45"W x 44"D x 56"H) 500kg (1,100 lbs)
Dust Collector Model	VNA-15		VF-5N	VNA-30	