



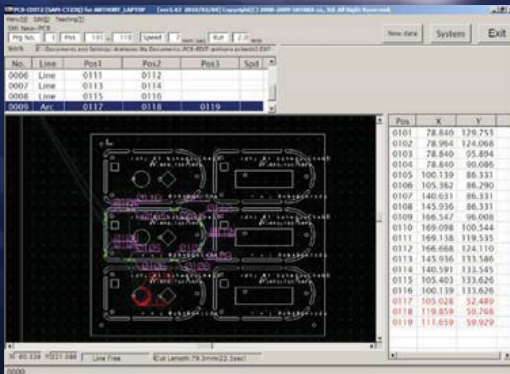
**Los Angeles Office:**  
 21241 S. Western Ave.  
 Suite 140  
 Torrance, CA 90501  
 Phone: (310) 540-7310  
 Fax: (310) 540-7930

**Atlanta Office:**  
 1580 Boggs Rd.  
 Suite 900  
 Duluth, GA 30096  
 Phone: (770) 446-3116  
 Fax: (770) 446-3118

**San Francisco Office:**  
 23785 Cabot Blvd.  
 Suite 306  
 Hayward, CA 94545  
 Phone: (510) 293-0580  
 Fax: (510) 293-0940

**SAYAKA SAM-CT23Q and Large Board Model, SAM-CT35Q are table-top, automatic precision PCB routers. The compact size and weight of these models are ideal for limited work spaces and versatility in production line set-up.**

**SAM-CT23Q/CT35Q**



- **Solution for Low-Stress Depanelization**  
 High-Speed router bit precisely cuts densely populated PCBs without stressing the board. Cutting paths can be set as close as 0.5mm to a component.
- **Compact Table-Top Design**  
 Sayaka's compact size and weight eases line arrangement and reduces time in setting up production.
- **Automatic Operation with Safety Features**  
 Easy push button control starts operation and safety door protects the operator during the routing process.
- **Low-Cost Router**  
 Precision table-top router with powerful dust collector offered at competitive price.
- **Offline Software Programming**

	SAM-CT23Q	SAM-CT35Q/36Q
Type	Table Top	
Program	Direct Teaching & Offline Software	
Routing Area	250mm x 350mm (9.8" x 13.8")	350mm x 500mm (13.8" x 19.7") 350mm x 600mm (13.8" x 23.6")
Max PCB Thickness (Standard)	3.0mm (0.079")	
Max PCB Thickness (Option)	6.0mm	
PCB Material	Glass Epoxy, CEM1, CEM3, FR4 etc.	
Router Bit Diameter	0.8~3.0 mm (0.031"~0.079")	
Repeatability	± 0.02 mm (± 0.0008")	
Spindle Motor	4025 (max 60,000rpm)	
Door	Auto	
Electrical Power	AC115V 60Hz	
Pneumatic	0.5MPa (72psi)	
Router Size & Weight	720W x 640D x 500Hmm (28"W x 25"D x 20"H) 60kg (132 lbs)	820/970W x 740D x 533Hmm (32/38"W x 29"D x 21"H) 75kg (165 lbs) / 80kg (175 lbs)
Dust Collector Model	VNA-15	VNA-30

Visit us at [www.seikausa.com](http://www.seikausa.com) to see more of our products!