



SAM-CT56XJ-i

I N - L I N E R O U T E R

- ▷ The ultimate full automation solution for PCBA Depaneling & Packing
- ▷ Flexible system, works as stand-alone & in-line to cover a large variety of products
- ▷ Simple point and click programming is possible thanks to the onboard camera
- ▷ Offline CAD programmng is also possible with included software
- ▷ Production data including QR code data can be saved for traceability & MES
- ▷ Provides accurate & precise cut (± 10 micron)
- ▷ Reliable routing system with fast takt-time (No.1 market share in Japan)
- ▷ Warranty & Technical support included



Easy GUI Programming



Accurate & Precise



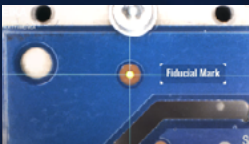
Traceability & MES



Flexible System, Works Off-line



Flexible System, Works In-line



Fiducial Marks Reading



Dual-pickup Arm



Human-touchless Packing



Automatic Bit Changer



Market Share in Japan

SAM-CT56XJ-i Specifications

<i>Routing Area</i>	500x600mm (19.6"x23.6")	<i>Spindle RPM</i>	5,000-60,000rpm (changeable)
<i>Material</i>	FR4, CEM1, CEM3, etc.	<i>X/Y/Z Controls</i>	AC servo motor
<i>Router Bit Diameter</i>	0.8-3mm	<i>Power Supply</i>	3ph 220V AC 50/60Hz
<i>Maximum Cut Speed</i>	50mm/sec	<i>Max Electric Consumption</i>	Approx 1.2kVA (including dust collector)
<i>Maximum Motion Speed</i>	1200mm/sec	<i>Air pressure</i>	0.5-0.7MPa
<i>Repeatability</i>	± 0.01 mm or less	<i>Air consumption</i>	20-40L/min
<i>Z axis stroke</i>	40 mm		

Visit us at www.seikausa.com
 to see more of our products!
 Email: info@seikausa.com



Seika
Web
Page



Seika
YouTube
Videos

